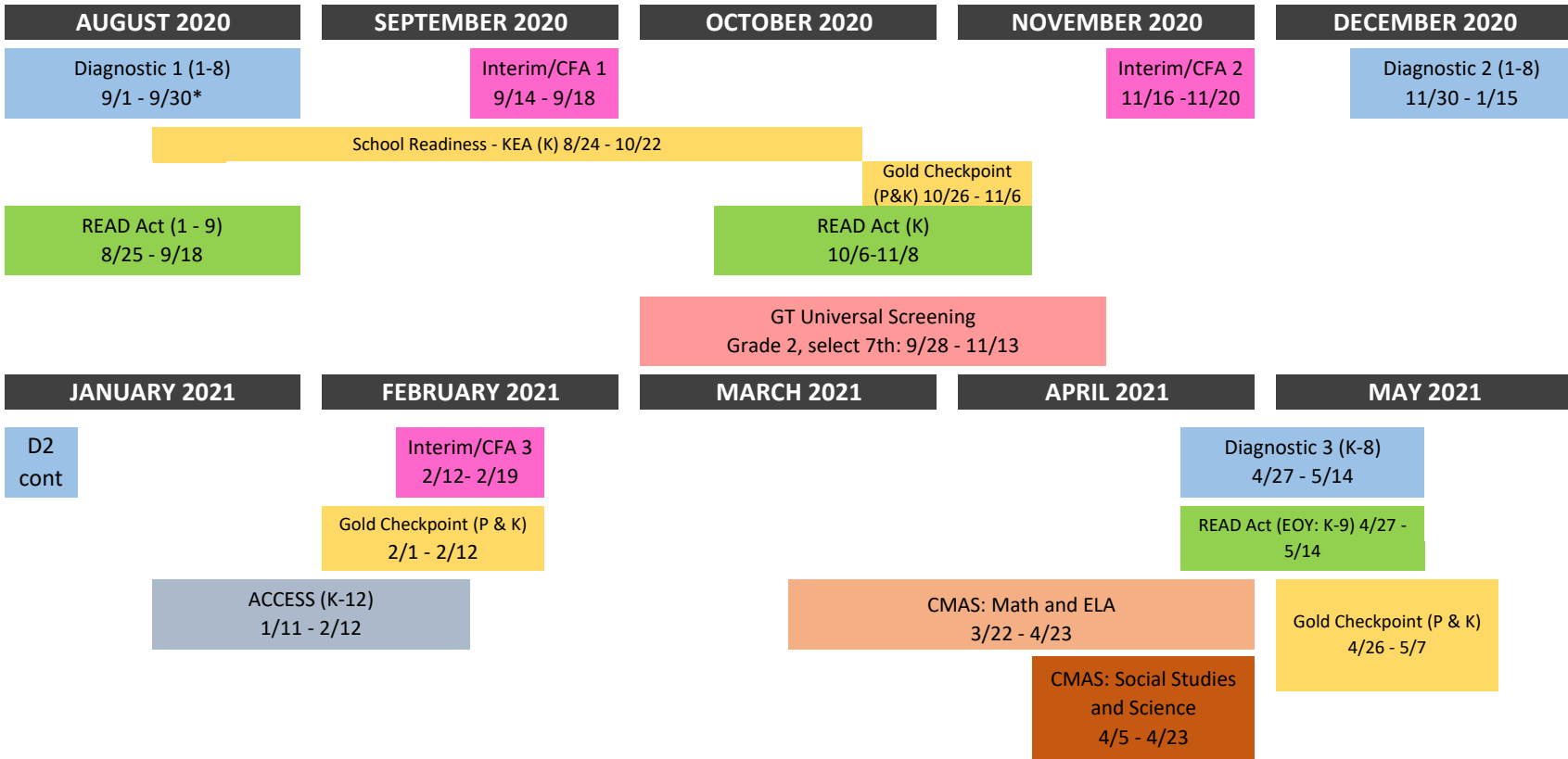




# 2020-21 Academic Assessment Calendar



Please note all dates are tentative and subject to change

\*We recommend waiting until the 3rd week of school to begin diagnostic #1. Please contact Assessment Dept. for more details.

Assessment Notes					
<b>Gold Checkpoint Due Dates</b> 11/6 (P & K) 2/12 (P & K) 5/7 (P & K)	<b>Kindergarten Entrance Assessment (KEA)</b> Due 10/22	<b>PSAT 9 &amp; 10</b> April 13, 14, or 15  <b>SAT</b> April 13	<b>Interim/CFA Illuminate</b> Grades PreK-10	<b>Diagnostic i-Ready Reading K - 8</b> (and all 9-12 students on READ plans) <b>i-Ready Math K-8</b> K: Diag 1 Oct 6-Nov 8 K: Diag 2 Feb 1-Feb 1	<b>W-APT (K) and WIDA Screener (1-12)</b> testing must take place within ten days of the first day of school. Students that enroll after the first 30 days of school must be tested within 4 days.
Teachers are also expected to administer periodic classroom assessments such as "end of unit" tests, running records, etc. as needed to inform instruction according to quarterly standards maps.					