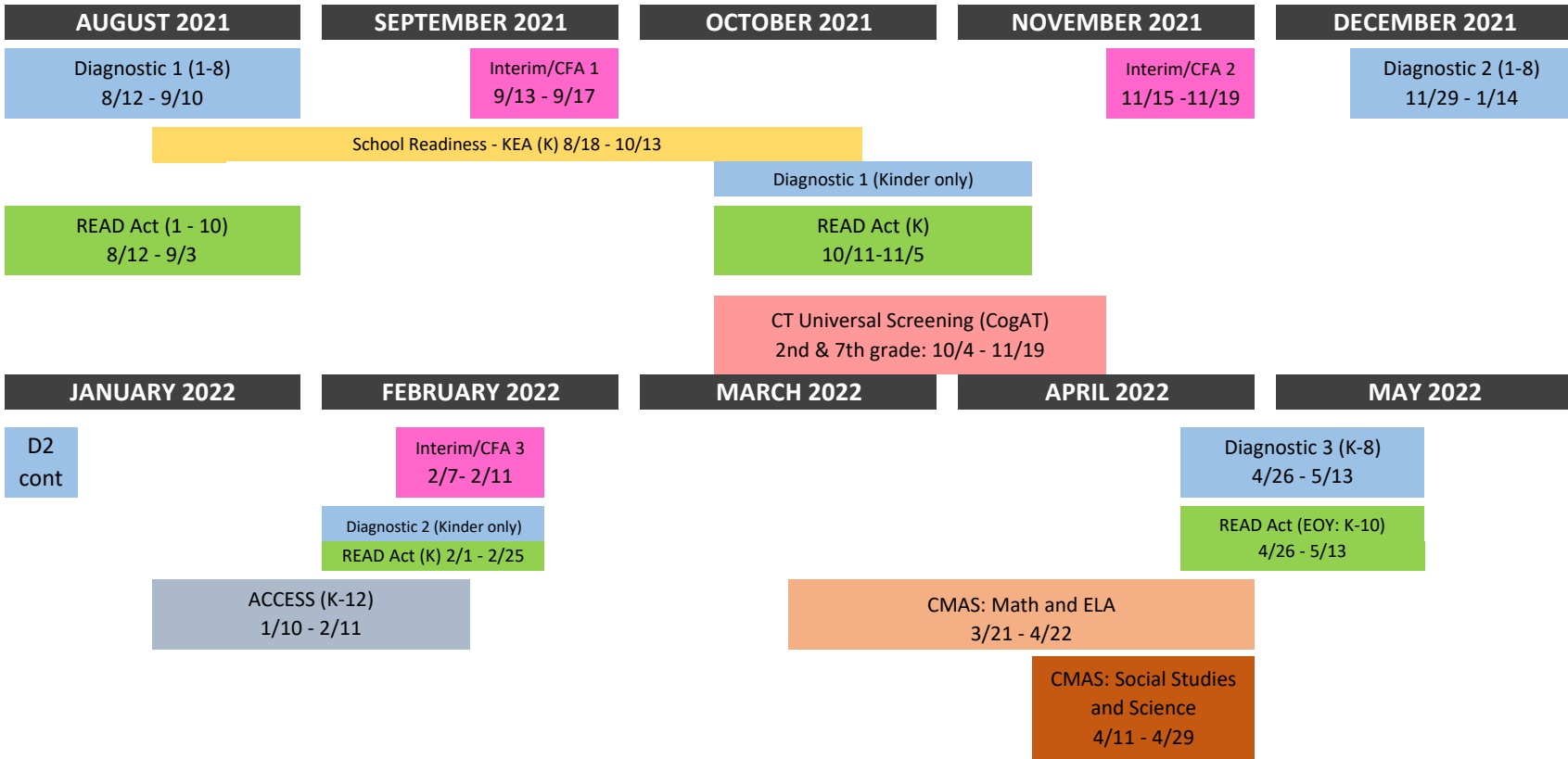




# 2021-22 Academic Assessment Calendar



Please note all dates are tentative and subject to change

Assessment Notes					
<b>Gold Checkpoint Due Dates</b> 10/29 (P & K) 2/4 (P & K) 5/6 (P), 5/26 (K)	<b>Kindergarten Entrance Assessment (KEA)</b> 8/18-10/13	<b>PSAT 9 &amp; 10</b> April 13, 14, or 15  <b>SAT</b> April 13	<b>Interim/CFA</b> Illuminate Grades PreK-10	<b>Diagnostic</b> i-Ready Reading K - 8 (and all 9-12 students on READ plans) i-Ready Math K-8 note different window for Diag #1 & #2 for K	<b>W-APT (K) and WIDA Screener (1-12)</b> testing must take place within ten days of the first day of school. Students that enroll after the first 30 days of school must be tested within 4 days.
Teachers are also expected to administer periodic classroom assessments such as "end of unit" tests, running records, etc. as needed to inform instruction according to quarterly standards maps.					